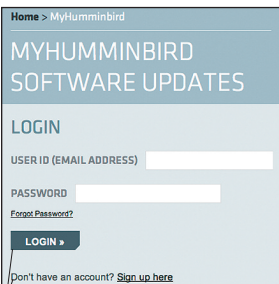


# Quick Start Guide

Visit [Humminbird.com](http://Humminbird.com) to Register Your Humminbird



Home > MyHumminbird

## MYHUMMINBIRD SOFTWARE UPDATES

LOGIN

USER ID (EMAIL ADDRESS)

PASSWORD

[Forgot Password?](#)

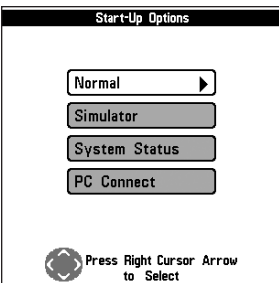
**LOGIN >**

[Don't have an account? Sign up here](#)


*login or create a new account*

**NOTE:** If your model does not have a card slot, you can use an optional-purchase PC Connect Cable.

## Start-Up Options Menu




Start-Up Options

Normal 

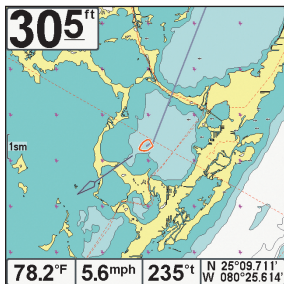
Simulator

System Status

PC Connect

 Press Right Cursor Arrow to Select

## 798c SI Chart View with Navionics Cartography



## Register your Humminbird®

Set up an online account so that you will receive the latest Humminbird news. If your model can be updated, you can download software updates from your account.

- 1. Register:** Go to our Web site at [humminbird.com](http://humminbird.com), and click **Support > Register Your Product**. Create a new account. If you already have an account, log in and click **Register a Product**.
- 2. Download Software:** Install a formatted SD card into the PC card slot. Select **My Humminbird > My Equipment**. The available software updates are listed as Downloads under each registered product. Under **Downloads**, click the file name. Follow the on-screen instructions to save the software to the SD card.
- 3. Update:** Insert the SD card into the control head card slot and power on the unit. Follow the on-screen instructions.

## Power On

- 1.** Press the POWER/LIGHT key.
- 2. On the Water:** If a transducer is attached to the control head, your unit will start **Normal** mode automatically.

**Simulator:** If a transducer is not attached to the control head, select Simulator to learn how to use the unit and save your settings. When the title screen is displayed, press the MENU key and then select **Simulator**.

## Select a Chart (*chart-capable models only*)

Humminbird Combo models include a built-in map. There are also some Humminbird models that are compatible with Navionics® and/or Humminbird LakeMaster® chart cards.

- 1.** Open the Main Menu and select **Chart tab > Chart Select** or **Navigation tab > Chart Select**. NVB units, select **Chart tab > NVB Chart Preference**.
- 2. Select a Chart Source:** Auto (the unit automatically selects the best chart to display), Contour XD, UniMap, Chart Card, Left Chart Card, or Right Chart Card; Default = Auto. Menu options vary by model.

# Menus

X-Press Menu

|  |                |         |
|--|----------------|---------|
|  | SI Side        | Both    |
|  | SI Sensitivity | Auto    |
|  | SI Enhance     |         |
|  | SI Range       | 20m     |
|  | Chart Speed    | 5       |
|  | SI Colors      | Inverse |

Use the 4-WAY  
Cursor Control key  
with the Menu System



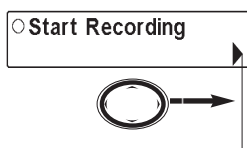
|  |                     |           |
|--|---------------------|-----------|
|  | Sonar               |           |
|  | Beam Select         | 83kHz     |
|  | Fish ID +           | Off       |
|  | Fish ID Sensitivity | 5         |
|  | RTS Window          | Wide      |
|  | Zoom Width          | Wide      |
|  | Transducer Select   | Quad Beam |

Main Menu



Press the LEFT or RIGHT  
Cursor key to Change or  
Activate a Setting

|  |             |      |
|--|-------------|------|
|  | Sensitivity | 10   |
|  |             | 1 20 |



The right arrow indicates to  
press the RIGHT Cursor key.

## 1. Open a Menu

**X-Press™ Menu:** Press the MENU key once.

The X-Press Menu displays frequently-used menu options that are related to the current view and operation mode.

**Main Menu:** Press the MENU key twice.

The Main Menu is divided into tabbed categories that vary by model. They are typically as follows: Alarms, Sonar, Navigation, Charts, Setup, Views, and Accessories.

## 2. Choose a Menu Option

Press the arrows on the 4-WAY Cursor Control key to browse the menu system.

**X-Press Menu:** Press the UP or DOWN Cursor key to select a menu option.

**Main Menu:** Press the RIGHT or LEFT Cursor key to select a tab, and then press the UP or DOWN Cursor key to select a menu option.

**User Mode:** Some menu options will only appear in the menu system if the control head User Mode is set to Advanced. Select **Main Menu > Setup tab > User Mode**. Select **Normal** or **Advanced**.

## 3. Set or Activate a Menu Setting

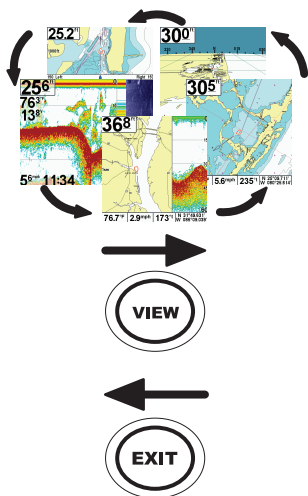
**Set:** Press the RIGHT or LEFT Cursor key to set the menu setting.

**OR**

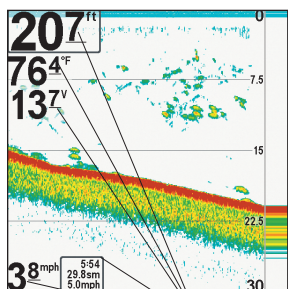
**Activate:** If there is a right arrow on the menu option, press the RIGHT Cursor key to activate the setting or start the selected operation. This menu type might also open a submenu.

**Close:** Press the EXIT key.

# Views

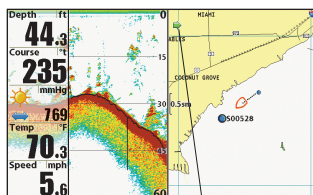


Customize the Digital Readouts



digital readouts

998c SI  
Sonar/Chart Combo View



The green arrow indicates the right side of the view is the selected or active side.

## Change the Active View

**Next View:** Press the VIEW key to advance to the next view in the View Rotation. Press the VIEW key repeatedly until the view you want to use is displayed on the screen.

**Previous View:** Press the EXIT key (repeatedly) to browse through the View Rotation in reverse order.

**Customize:** You can choose which views are hidden or visible in the View Rotation.

1. Select the **Views** tab from the Main Menu. If your control head does not include a Views tab, select **Setup tab > Views**.
2. Select a view name and choose **Hidden** or **Visible**. Also, see *Key Functions: View Preset Keys*.

## Change Digital Readouts

Each view displays digital readout information (such as speed or time), which will vary with the selected view, attached accessories, and navigation mode.

1. Select the **Setup** tab from the Main Menu.
2. Choose **Select Readouts**, and then press the RIGHT Cursor key.

**NOTE:** If the *Select Readouts* menu option does not appear under the *Setup* tab, change the *User Mode* to *Advanced* (see *Menus*).

3. Select a data window position. Press the RIGHT or LEFT Cursor key to scroll through the available readouts. To hide the data window, select **Off**.

## Select an Active Side

(Model Series: 800, 900, 1100, HELIX™)

You can apply menu settings to each side of a Combo View. The green arrow on the view points to the active side.

1. Press the MENU key once in a Combo View and select **Active Side** from the X-Press Menu.
2. Select **Right** or **Left** to choose an active side. Key presses and menu selections will be applied to the active side of the view.

# Key Functions



**POWER/LIGHT Key:** Press the POWER/LIGHT key to Power On. Press and hold the POWER/LIGHT key to Power Off. During operation, press the POWER/LIGHT key to open the Backlight & Background Color menu setting (color models) or the Backlight & Contrast menu setting (monochrome models).



**ZOOM Keys:** Press the +/- ZOOM keys to adjust the zoom range in Sonar Zoom View or change the scale of the Chart views to appear closer or farther away. In Side Imaging® View, move the active cursor to a location, and then press the +ZOOM key to magnify your selection.



**VIEW Key:** Press the VIEW key to advance to the next view in the View Rotation. Press the VIEW key repeatedly to see all the views in the View Rotation (see **Views**).



**4-WAY Cursor Control Key:** Press any arrow on the 4-WAY Cursor Control key to move the active cursor. Also, use this key to browse the menu system, select menu options, and change or activate menu settings (see **Menus**).



**INFO Key:** Press the INFO key to view information about the cursor position or about objects located near the cursor position. If the cursor is not active, the Chart Info submenu will be displayed. Your unit may have one of the keys shown here.



**MARK Key:** Press the MARK key to save a waypoint at the boat location. If the cursor is active, the waypoint will be marked at the cursor location. If Screen Snapshot is turned on, a screen snapshot will be created with the waypoint, and it will be saved to the installed SD card.



**MENU Key:** Press the MENU key once to open the X-Press Menu. Press the MENU key twice to open the Main Menu (see **Menus**).



**GOTO Key:** With an active cursor, press the GOTO key once to create a waypoint and start navigation towards that waypoint. Without an active cursor, press the GOTO key, and choose a waypoint from the saved waypoints list. Man Overboard (MOB): Press and hold the GOTO key (**700, 800, 900, 1100, and HELIX Series only**).



**EXIT Key:** Press the EXIT key to close a menu, exit cursor mode, or turn off an alarm. Also, press the EXIT key to scroll through the View Rotation in reverse order (see **Views**).



**VIEW PRESET Keys:** Press and hold a VIEW PRESET key to save the displayed view. When the view has been saved, the control head will beep. You can save one view on each VIEW PRESET key.

Your Humminbird may not have all of the features described in this guide. Also, the illustrations may not look exactly like the screens on your control head, but your unit will operate in a similar way. See your operations manual for details. Call Humminbird Customer Service with questions at **1-800-633-1468** or e-mail **service@humminbird.com**.